

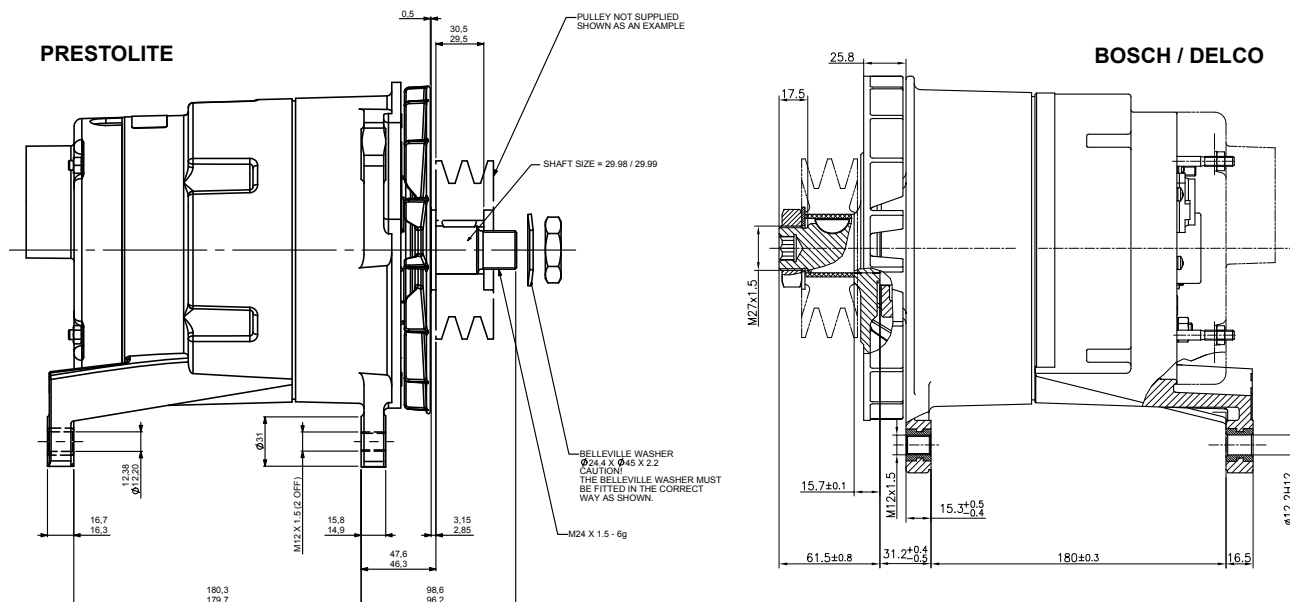
Source: Prestolite Electric Ltd - Greenford, London, UK
Date: October 13, 2008
Bulletin No: TSB4029
Models: AC172TRA vs T1 Alternators
Subject: Vehicle fitment support

Fitment support for AC172TRA alternators

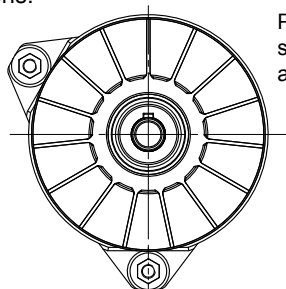
The AC172TRA range is a Prestolite designed and manufactured alternator, designed as a drop-in replacement for Bosch T1 alternators. The Prestolite unit does look slightly different to the Bosch T1 (or Delco copy) but DOES fit as a replacement. Below are illustrations of Bosch 0120 689 571, Delco 19025330, 19025339 and the Prestolite equivalent 1277640. Dimension below show that shaft size is comparable, and mounting dimensions are correct.

There are small 2 variances:

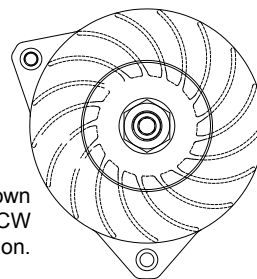
1. Bosch / Delco use M27 x 1.5 end shaft thread with matching washers and shaft nuts. Prestolite use M24 x 1.5 end shaft thread, but also supply washers and shaft nut, therefore ensuring fitment of pulley.



2. Bosch / Delco is fitted with aluminium fan and in some cases a special low noise fan. The fans used by Prestolite have been designed for low noise applications, and are fitted as standard. The Prestolite fan is also bi-directional and has straight vanes, where some Bosch or Delco fans might have curved vanes (as shown below) and can only be used in clockwise rotation applications.



Prestolite low noise fan with straight vanes. Can be used on CW and CCW rotational applications



Bosch / Delco fan. Image shown is low noise fan, but only CW rotational application.

Important: The information contained in this bulletin is intended for use by trained, professional technicians who have the proper tools, equipment, and training to perform the required maintenance described above. This information is NOT intended for 'do-it-yourselfers', and you should not assume that this information applies to your equipment. If you have any questions regarding this information please visit our website at www.prestolite.com, or contact our technical service department at: